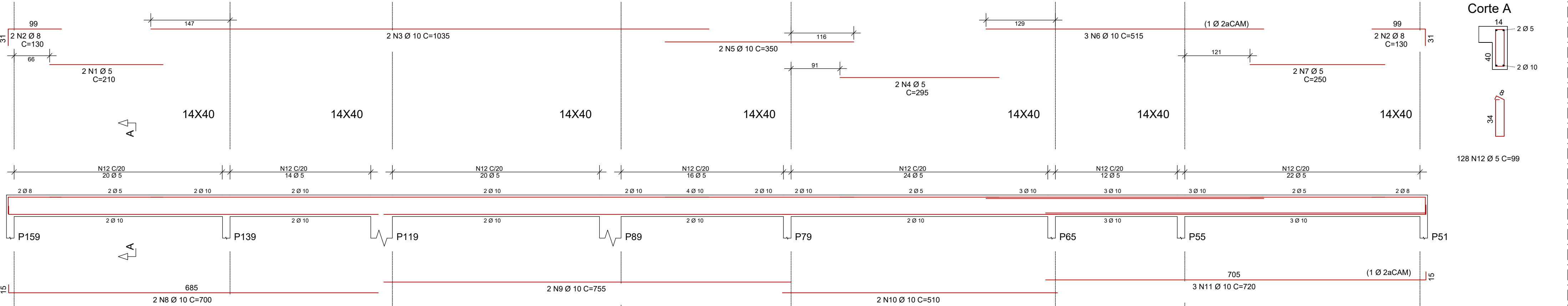
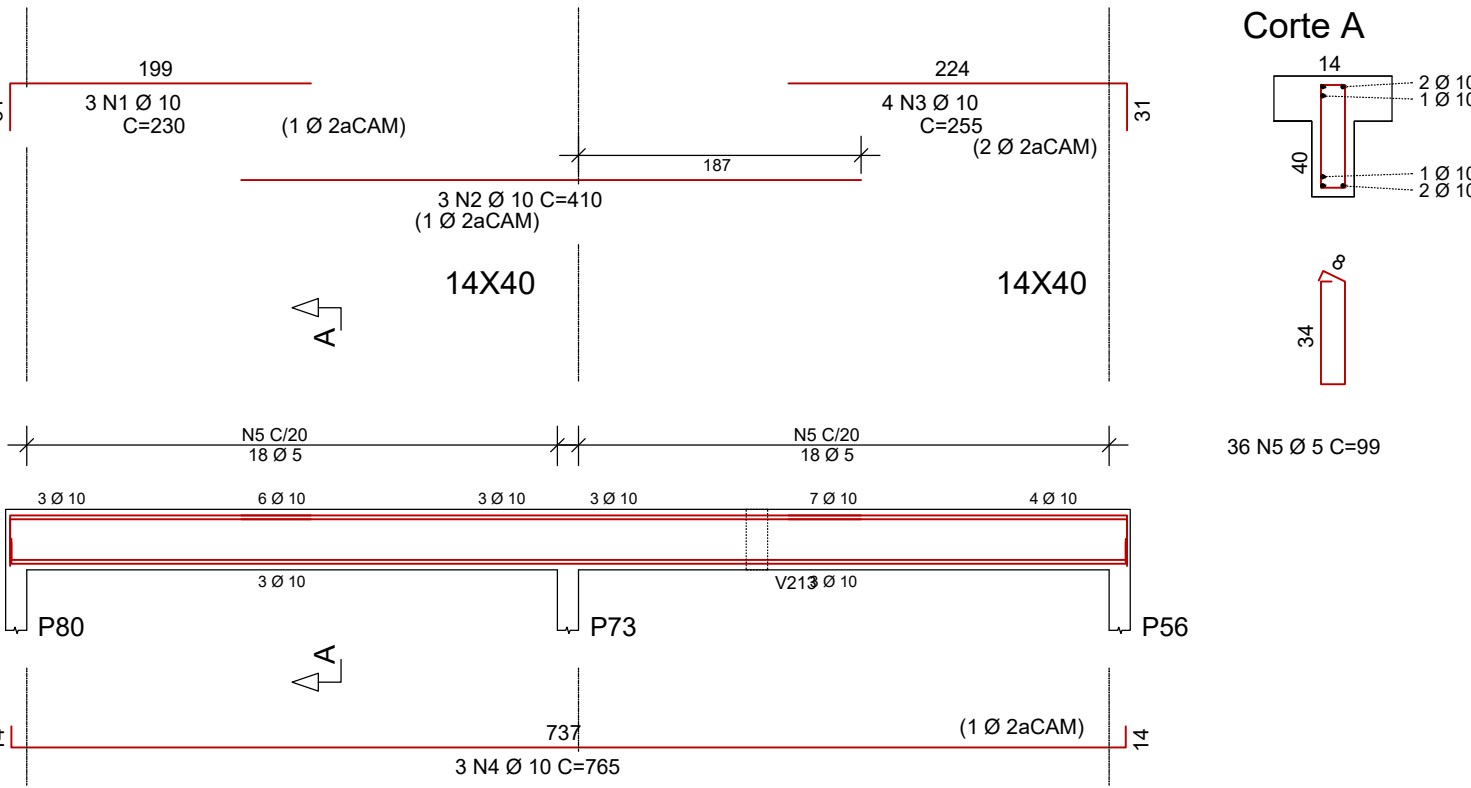


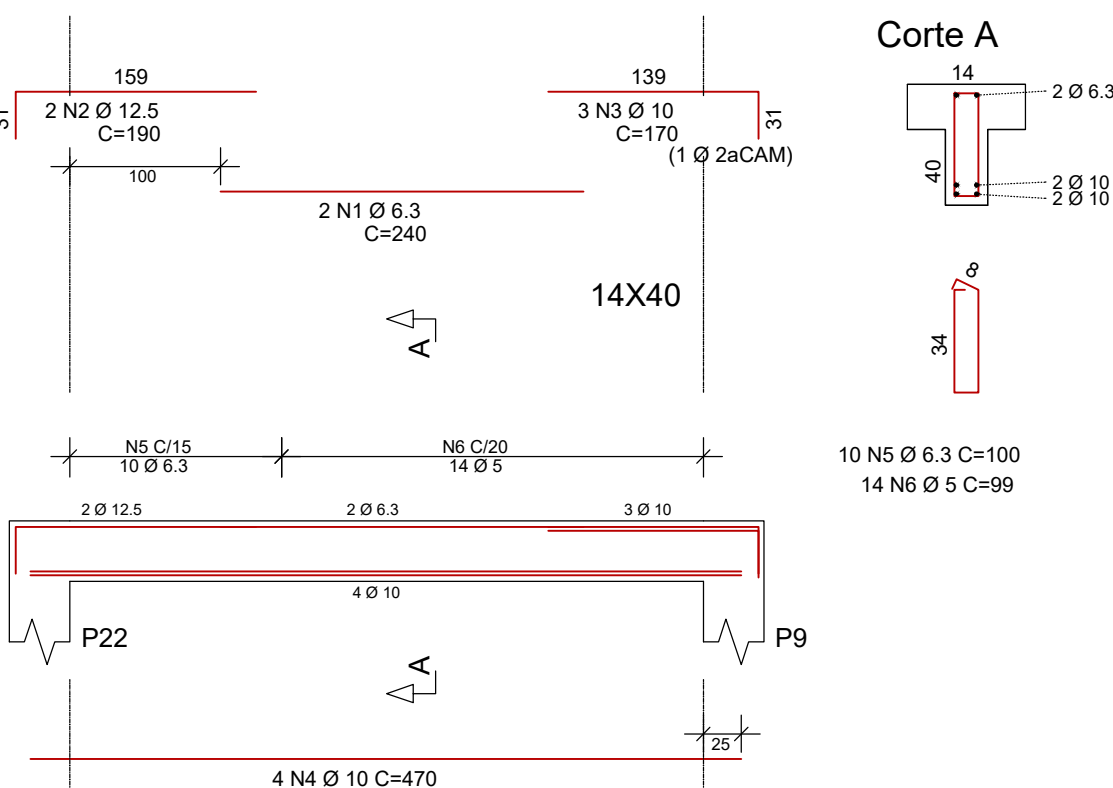
V248



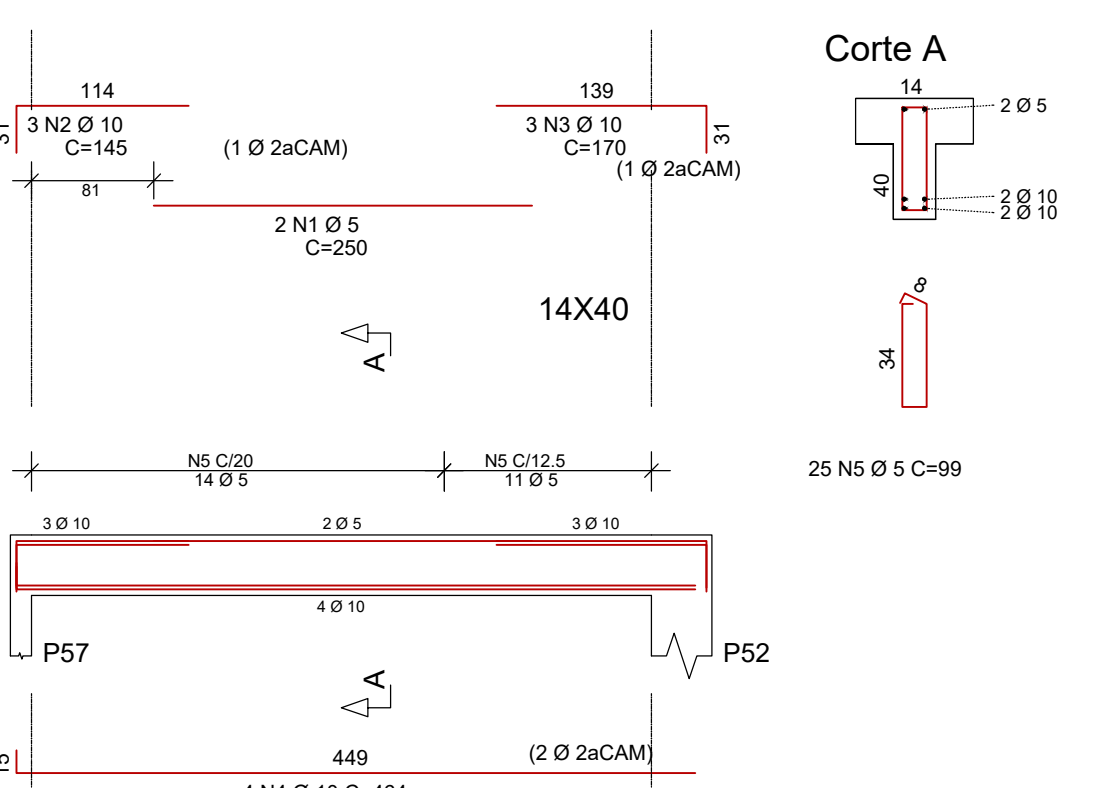
V249



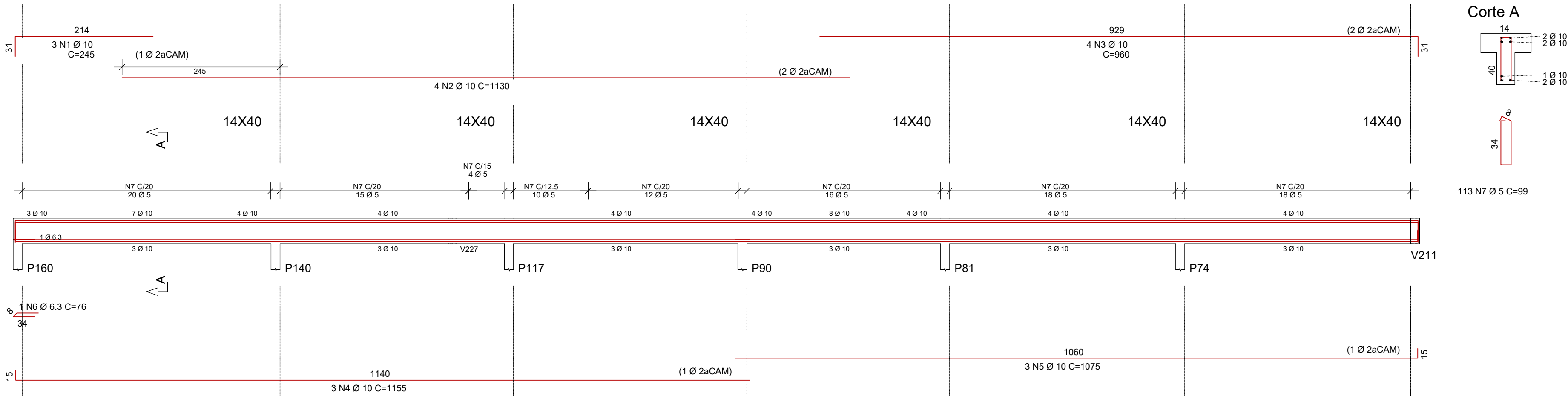
V250



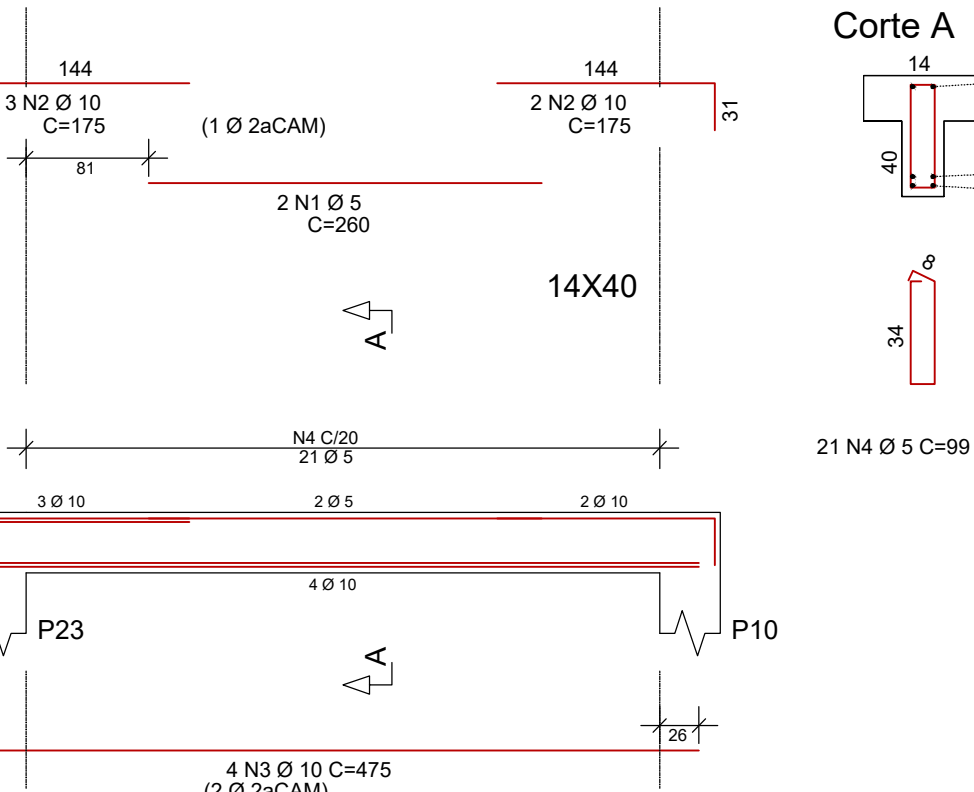
V251



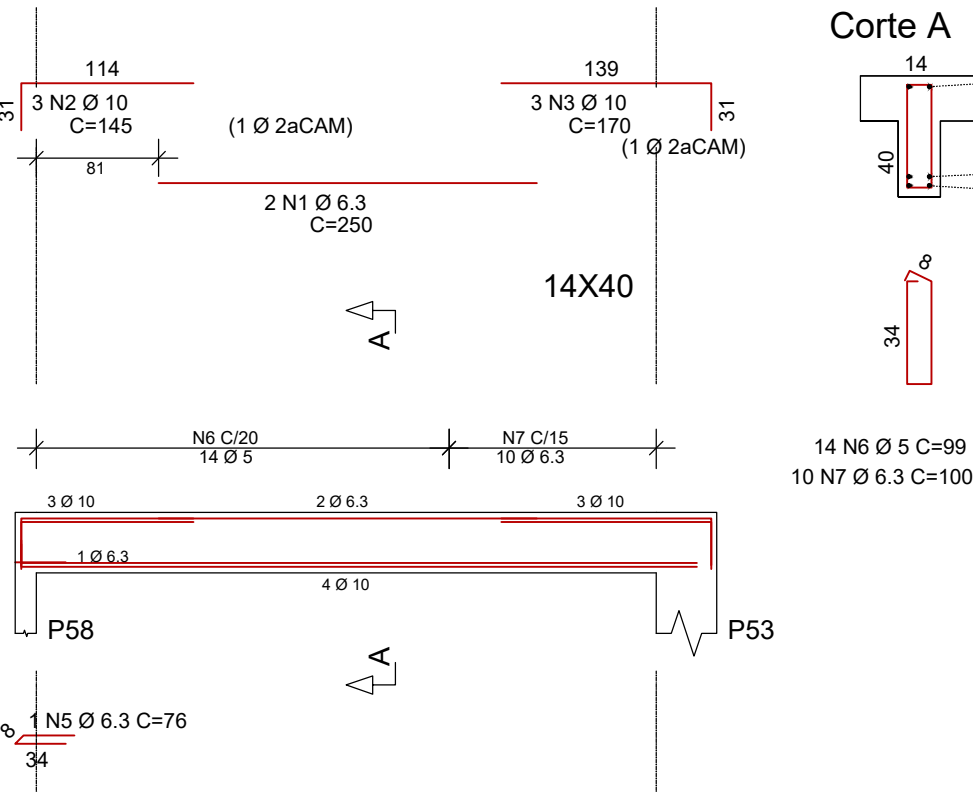
V252



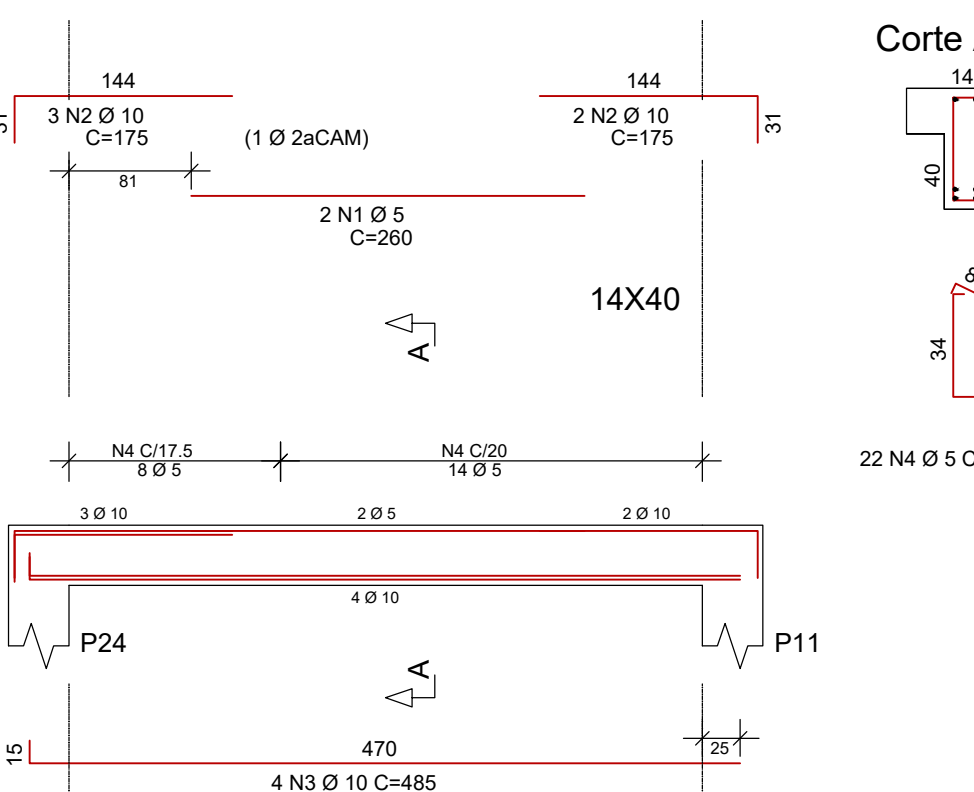
V253



V254



V255



	AÇO	POS	BIT (mm)	QUANT	COMPRIMENTO	
					UNIT (cm)	TOTAL (cm)
V248	60B	1	5	2	210	420
	50A	2	8	4	130	520
	50A	3	10	2	1035	2070
	60B	4	5	2	295	590
	50A	5	10	2	350	700
	60B	6	10	3	515	1545
	60B	7	5	2	250	500
	50A	8	10	2	700	1400
	50A	9	10	2	755	1510
	50A	10	10	2	510	1020
	50A	11	10	3	720	2160
	60B	12	5	128	99	12672
V249	50A	1	10	3	230	690
	50A	2	10	3	410	1230
	50A	3	10	4	255	1020
	50A	4	10	3	765	2295
	60B	5	5	36	99	3564
V250	50A	1	6.3	2	240	480
	50A	2	12.5	2	190	380
	50A	3	10	3	170	510
	50A	4	10	4	470	1880
	50A	5	6.3	10	100	1000
	60B	6	5	14	99	1386
V251	60B	1	5	2	250	500
	50A	2	10	3	145	435
	50A	3	10	3	170	510
	50A	4	10	4	464	1856
	60B	5	5	25	99	2475
V252	50A	1	10	3	245	735
	50A	2	10	4	1130	4520
	50A	3	10	4	960	3840
	50A	4	10	3	1155	3465
	50A	5	10	3	1075	3225
	50A	6	6.3	1	76	76
	60B	7	5	113	99	11187
V253	60B	1	5	2	260	520
	50A	2	10	5	175	875
	50A	3	10	4	475	1900
	60B	4	5	21	99	2079
V254	50A	1	6.3	2	250	500
	50A	2	10	3	145	435
	50A	3	10	3	170	510
	50A	4	10	4	462	1848
	50A	5	6.3	1	76	76
	60B	6	5	14	99	1386
	50A	7	6.3	10	100	1000
V255	60B	1	5	2	260	520
	50A	2	10	5	175	875
	50A	3	10	4	485	1940
	60B	4	5	22	99	2178

RESUMO AÇO CA 50-60			
AÇO	BIT (mm)	COMPR (m)	PESO (kg)
60B	5	400	62
50A	6.3	31	8
50A	8	5	2
50A	10	450	278
50A	12.5	4	4
Peso Total 60B =			62 kg
Peso Total 50A =			291 kg

Exco. Faces  
Volume de concreto de VIGAS (m3) 4.4 4.1  
Taxa de armadura (kg/m3) 81.0 85.8

ESPAÇO RESERVADO PARA PREFEITURA:

PROJETO:  
TERMINAL RODOVIÁRIO DE VÁRZEA GRANDE - MT

CONTRATO: 0.5 N° 001/2021

N°: XXXX  
DATA: 02

REVISÃO N°: 02  
DATA:

ESCALA INDICADA:  
ESCALA INDICADA NO PROJETO: cm

UNIDADE: cm

CONTEÚDO:  
• DETALHAMENTO DE VIGAS DA COBERTURA 01

NOME DO CLIENTE: VÁRZEA GRANDE

ASSINATURA DO CLIENTE:

AUTOR DO PROJETO:

ASSINATURA PROFISSIONAL:

RESPONSÁVEL TÉCNICO DO PROJETO:

ASSINATURA PROFISSIONAL:

RRT PROJETO:

CONFIGURAÇÃO DE PLOTAGEM:  
☐ MODELO PMC  
☐ ARQUIVO EM ANEXO

RRT DE EXECUÇÃO: